

Reference Points Help With Precise Car Placement!

**LEFT
Reference
Points**

**Use q-u-i-c-k glances to
check position & mirrors! Avoid
staring, at reference points!
(Use quick glance, quick glance)**

**RIGHT
Reference
Points**

1 foot in on hood →



**(Check side-view mirror
to confirm position)**



← 6 inches from
line or median



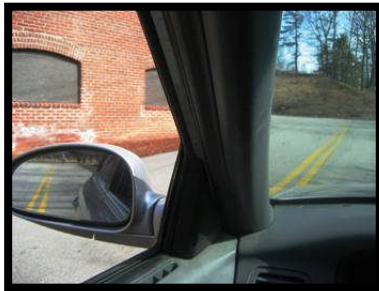
6 inches from →
line or curb

← Center of hood



**(Maybe line up wiper
post or pivot)**

Left corner of car →



← 3 feet from line
or median

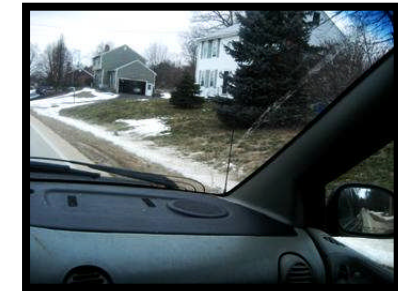
Line of Sight →

Reference
point →



3 feet from line →
or curb

← 1 foot in on hood



Line of Sight (LOS) & Path of Travel (LOS)

LOS = Line-Of-Sight Blockage

Blocks a driver's ability to gather critical information about their intended path.

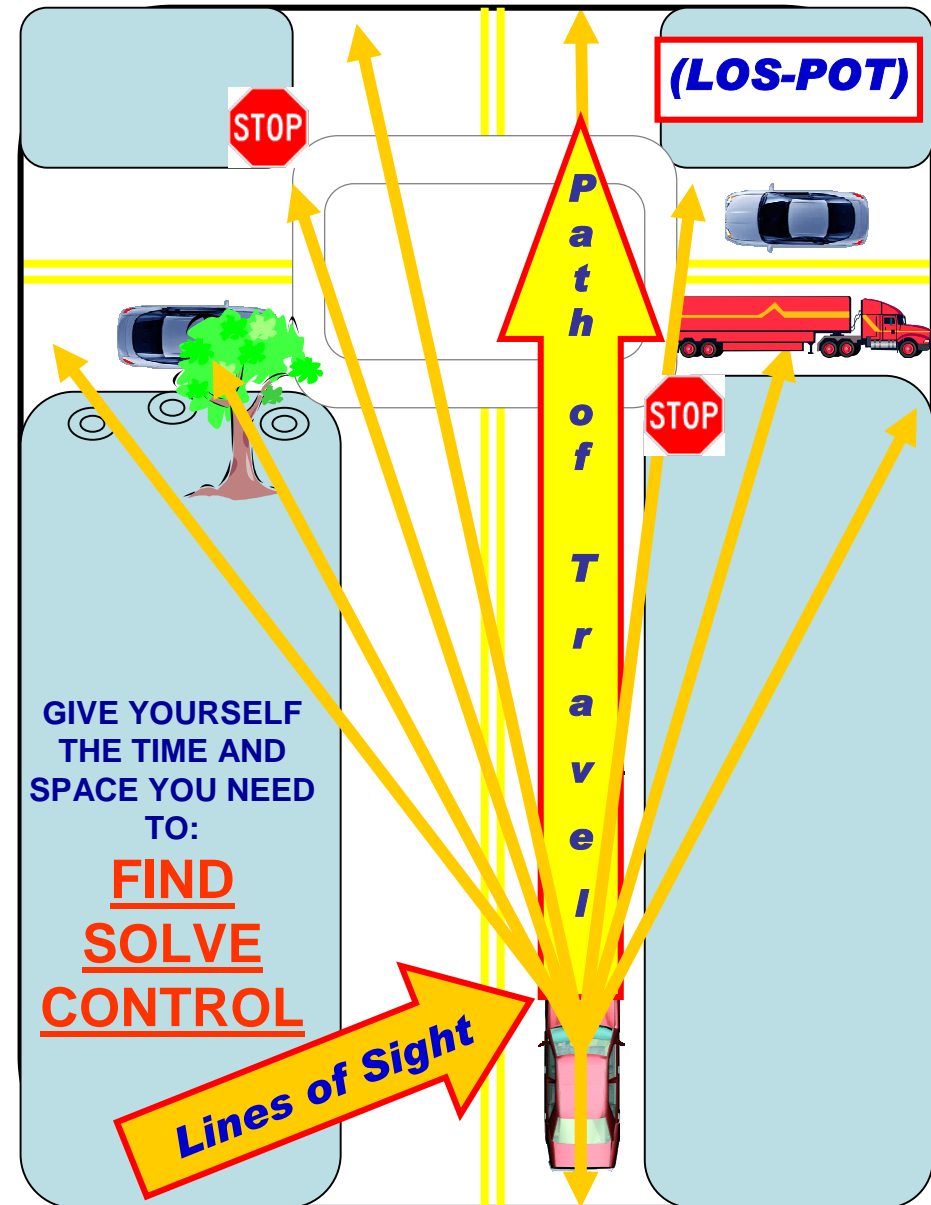
POT = Path-of-Travel Blockage/Restriction

Can or does prevent driver from occupying space.

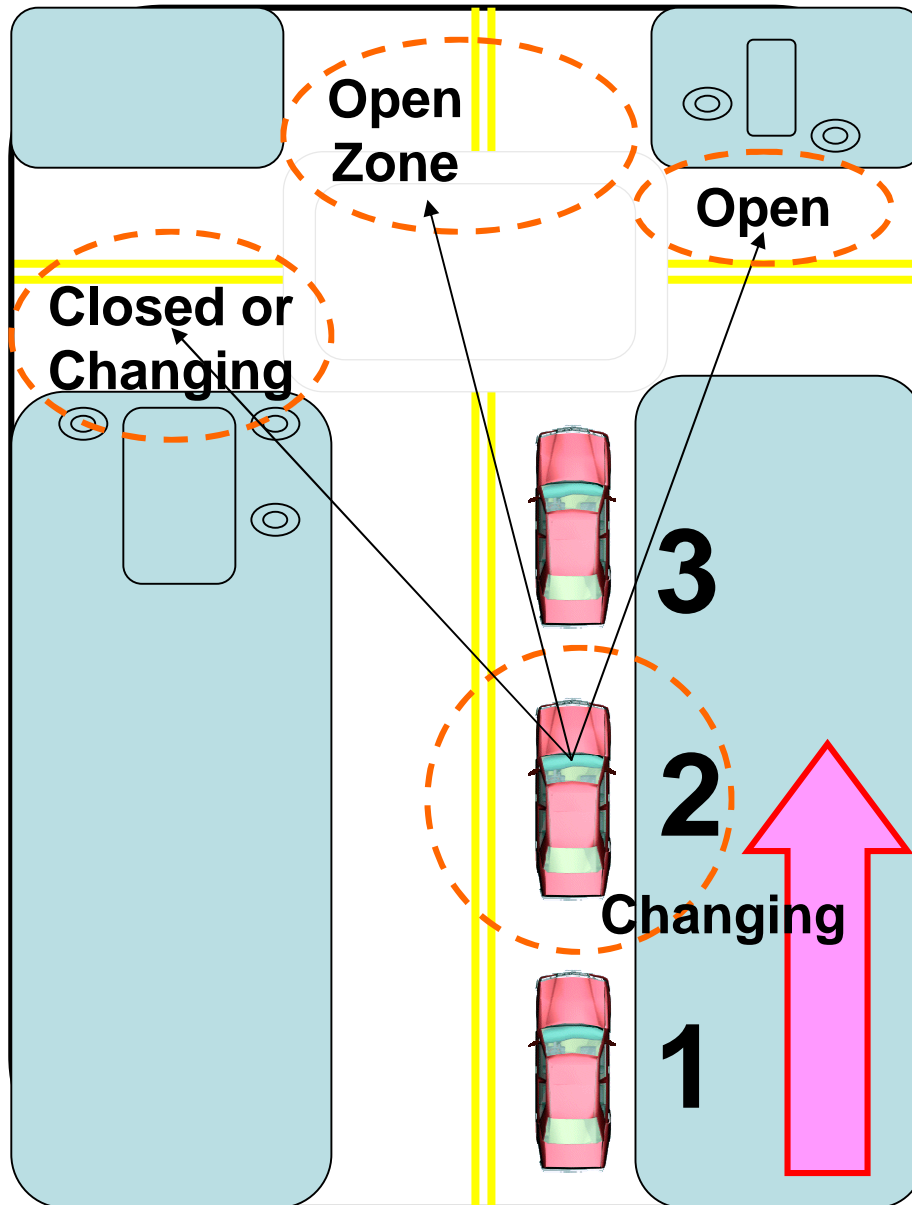
LOS-POTs always reduce the control options the driver has over his/her driving space.

Find LOS-POT Zone Changes

- **FIND**
- **SOLVE**
- **CONTROL**



Approaching Intersections



Step 3 (CONTROL-Act)

- Adjust speed
- Maintain lane Position
- Stop behind Crosswalk
- Or proceed Through Open Space Area

Step 2 (SOLVE-Evaluate)

- Scan Open Side Areas.. 1st
- Scan Closed Side Areas
- Look for Closed or Changing Frontal Areas

Step 1 (FIND-Search)

- Identify Intersection
- Identify Controls
- Check rear Areas
- Search for Intersection Problems